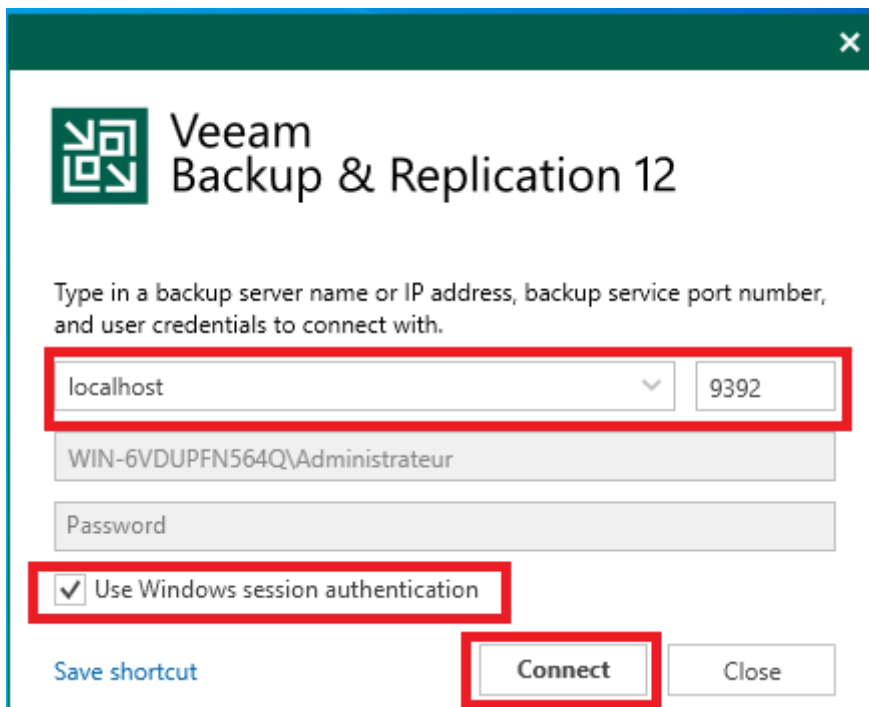


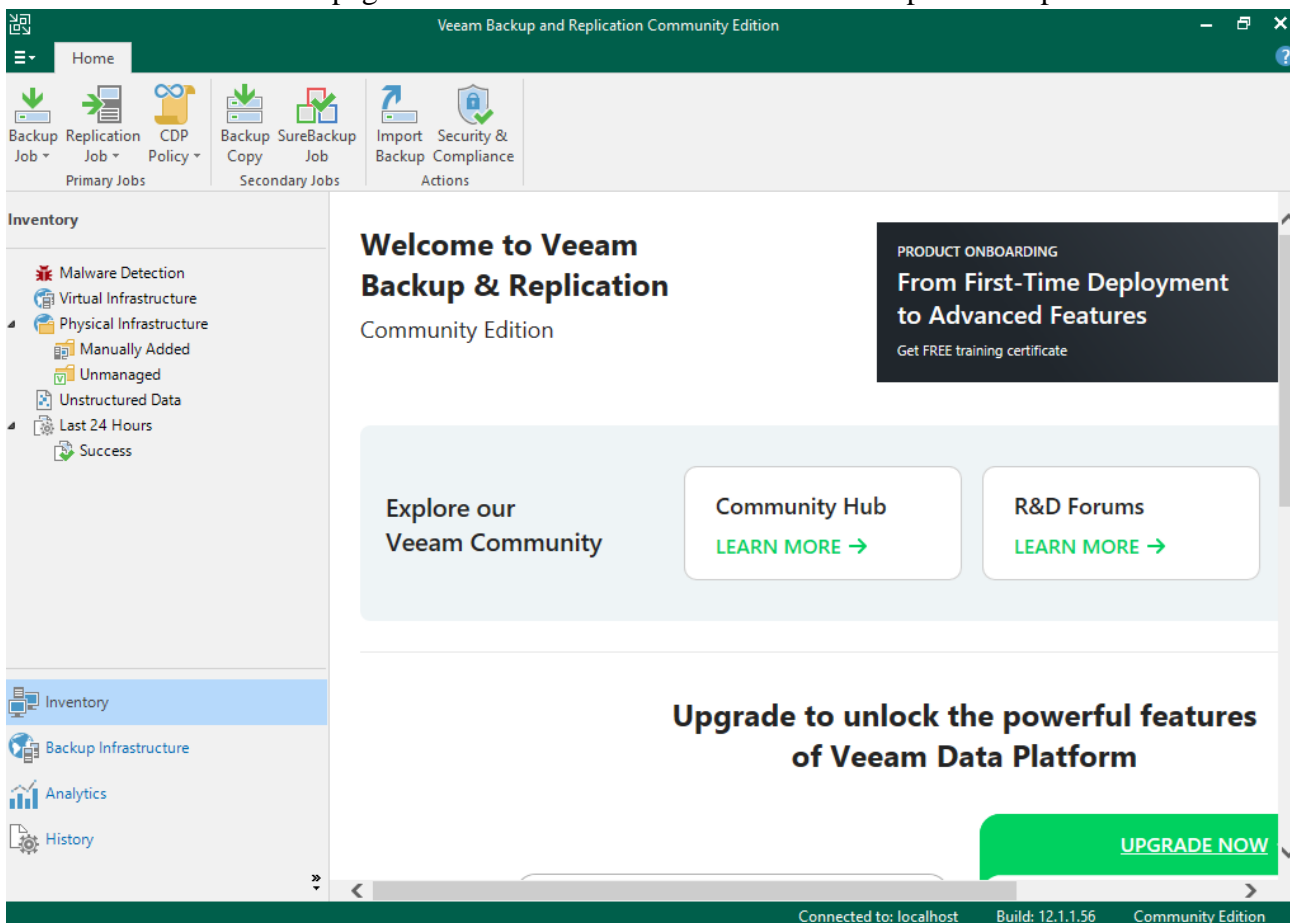
## Installation du Repository

Assurez vous ensuite de selectionner "localhost", cochez "Use Windows session authentication", puis cliquer sur "Connect".



The image shows the 'Veeam Backup & Replication 12' connection dialog box. It has a dark green header with the Veeam logo and title. Below the title, there is a text prompt: 'Type in a backup server name or IP address, backup service port number, and user credentials to connect with.' The form contains several fields: a dropdown menu for the server name (set to 'localhost'), a text box for the port number (set to '9392'), a text box for the username (set to 'WIN-6VDUPFN564Q\Administrateur'), and a password field. Below these fields is a checkbox labeled 'Use Windows session authentication' which is checked. At the bottom, there are three buttons: 'Save shortcut', 'Connect', and 'Close'. Red rectangular boxes highlight the 'localhost' dropdown, the '9392' port field, the 'Use Windows session authentication' checkbox, and the 'Connect' button.

Une fois arriver sur cette page vous avez réussi ! Veeam est installé et prêt à l'emploi !

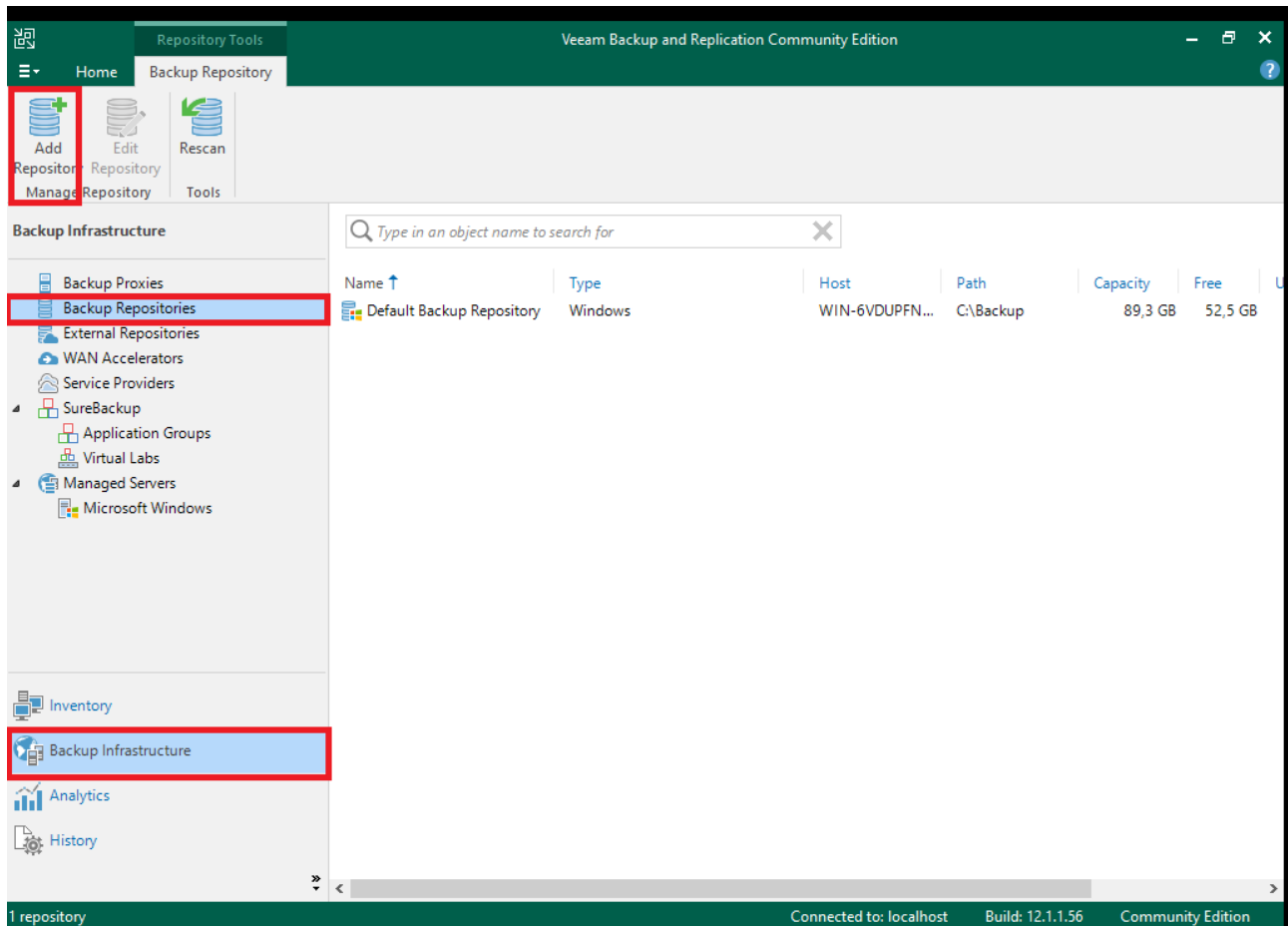


The image shows the main interface of 'Veeam Backup and Replication Community Edition'. The top bar is dark green with the title 'Veeam Backup and Replication Community Edition'. Below it is a navigation bar with icons for 'Backup Job', 'Replication Job', 'CDP Policy', 'Backup Copy', 'SureBackup Job', 'Import Backup', and 'Security & Compliance Actions'. The main area is divided into two sections. On the left is the 'Inventory' pane with a tree view showing 'Malware Detection', 'Virtual Infrastructure', 'Physical Infrastructure' (with sub-items 'Manually Added', 'Unmanaged', 'Unstructured Data'), 'Last 24 Hours', and 'Success'. The right section has a 'Welcome to Veeam Backup & Replication Community Edition' message. To the right of this is a 'PRODUCT ONBOARDING' box with the text 'From First-Time Deployment to Advanced Features' and 'Get FREE training certificate'. Below the welcome message are three buttons: 'Explore our Veeam Community', 'Community Hub' (with a 'LEARN MORE →' link), and 'R&D Forums' (with a 'LEARN MORE →' link). At the bottom right, there is a large green button labeled 'UPGRADE NOW'. The bottom status bar shows 'Connected to: localhost', 'Build: 12.1.1.56', and 'Community Edition'.

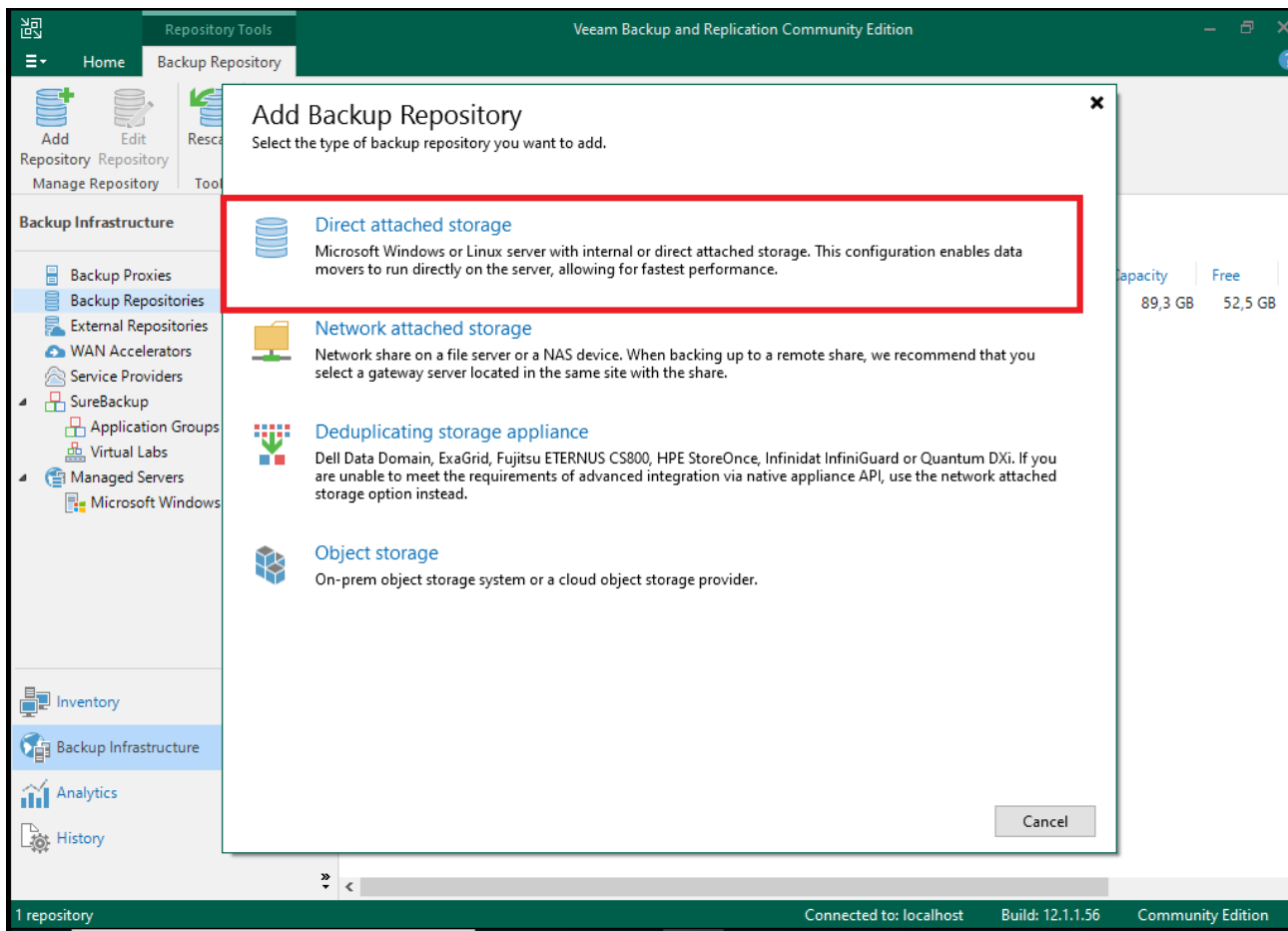
Pour démarrer l'utilisation de Veeam Backup et pour effectuer une sauvegarde il faut :

Cliquer sur "Backup infrastructure " en bas à gauche de la page, puis cliquer sur "Backup Repositories".


Une fois sur la page ci-dessous cliquer sur "Add Repository Manage" en haut à gauche de la page.



Sur ce pop up, il faut choisir "Direct attached storage"




Ensuite sélectionner le système d'exploitation en fonction du serveur de sauvegarde que vous voulez sauvegarder, dans notre cas c'est windows.



## Direct Attached Storage


✕

Select the operating system type of a server you want to use as a backup repository.




### Microsoft Windows

Adds local storage presented as a regular volume or Storage Spaces. For better performance and storage efficiency, we recommend using ReFS.



### Linux

Adds local storage or locally mounted NFS share. For better performance and storage efficiency, we recommend using XFS. The Linux server must use bash shell, and have SSH and Perl installed.



### Linux (Hardened Repository)

Requires a Linux server with internal or direct attached storage. This configuration enables protection against cybersecurity threats with immutable backups. The Linux server must use bash shell and have SSH installed. For reduced attack surface, minimal Linux installation is highly recommended.

Cancel

Ensuite configurez le Repository en indiquant le nom dans la cas "Name", puis clquer sur "Next"

New Backup Repository

Name

Type in a name and description for this backup repository.

Name

Server

Repository

Mount Server

Review

Apply

Summary

Name:

Backup Repository 1

Description:

Created by WIN-6VDUPFN564Q\Administrateur at 02/04/2024 20:51.

< Previous

Next >

Finish

Cancel

Sur cette page "Server" cliquer sur "Add new repository"

New Backup Repository

Server

Choose repository server. You can select server from the list of managed servers added to the console.

Name

Server

Repository

Mount Server

Review

Apply

Summary

Repository server:

WIN-5RQPB6JO5CD.sauvegarde.local (Backup server)

Add New...

Path	Capacity	Free
------	----------	------

Populate

< Previous

Next >

Finish

Cancel

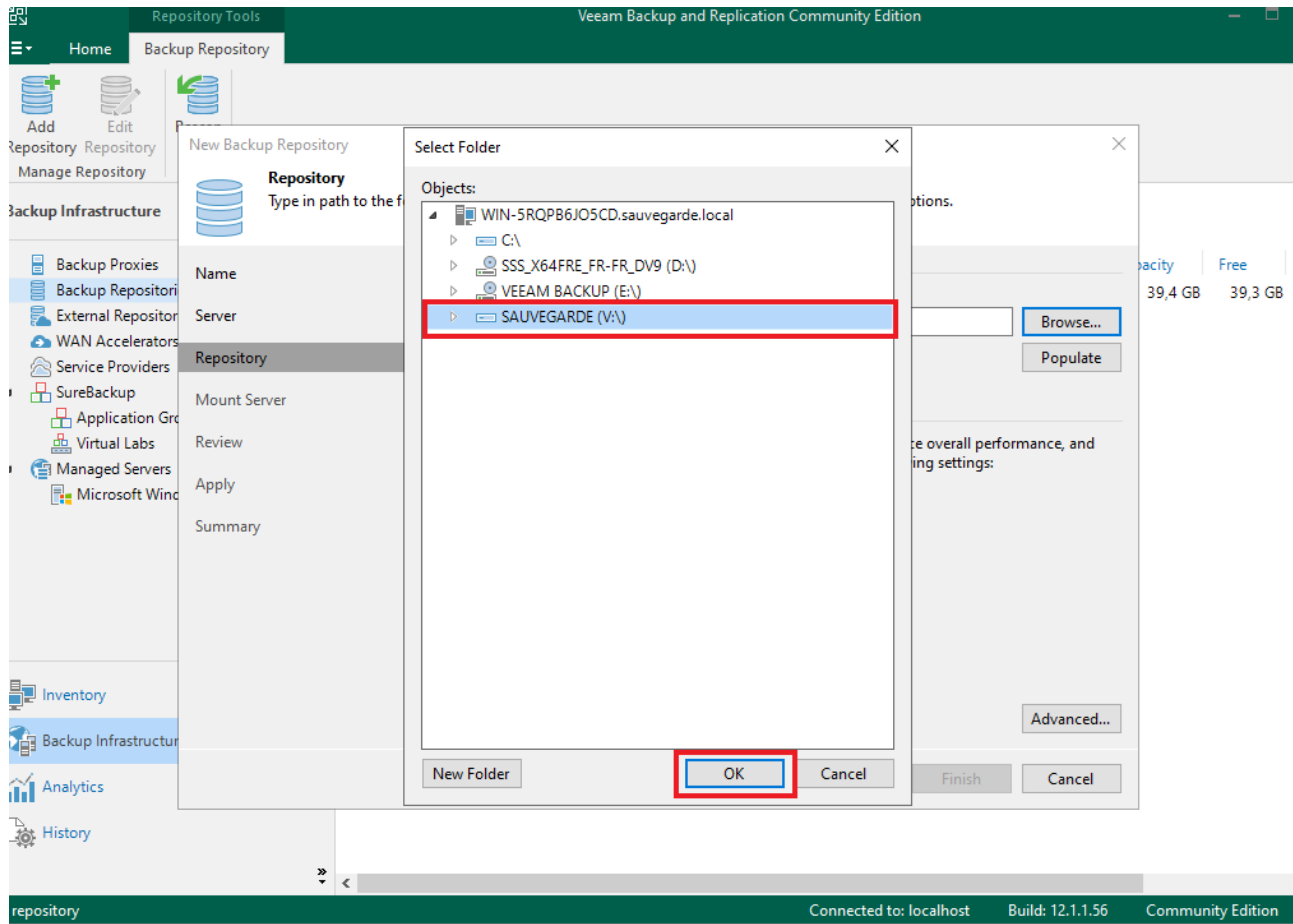
Capacity

Free

39,4 GB

39,3 GB

Sélectionner le disque sur lesquelles il y aura la sauvegarde



## Trouver le chemin du disque de sauvegarde

New Backup Repository




### Repository

Type in path to the folder where backup files should be stored, and set repository load control options.

Name	Location
Server	Path to folder: <input type="text" value="V:\"/>
Repository	<input type="button" value="Browse..."/>
Mount Server	Capacity: <Unknown> Free space: <Unknown> <input type="button" value="Populate"/>
Review	Load control
Apply	Running too many concurrent tasks against the repository may reduce overall performance, and cause I/O timeouts. Control storage device saturation with the following settings:
Summary	<input checked="" type="checkbox"/> Limit maximum concurrent tasks to: <input type="text" value="4"/>
	<input type="checkbox"/> Limit read and write data rate to: <input type="text" value="1"/> MB/s
	Click Advanced to customize repository settings. <input type="button" value="Advanced..."/>
	<input type="button" value=" &lt; Previous"/> <input type="button" value=" Next &gt; "/> <input type="button" value=" Finish"/> <input type="button" value=" Cancel"/>

Trouver ce chemin Veeam sur votre disque où est installé Veeam

New Backup Repository ×

 **Mount Server**  
Specify a server to mount backups to when performing advanced restores (file, application item and instant VM recoveries).  
Instant recoveries require a write cache folder to store changed disk blocks in.


Name	Mount server:
Server	WIN-5RQPB6JO5CD.sauvegarde.local (Backup server) <span>Add New...</span>
Repository	Instant recovery write cache folder: V:\ProgramData\Veeam\Backup\IRCache\ <span>Browse...</span>
Mount Server	Ensure that the selected volume has sufficient free disk space to store changed disk blocks of instantly recovered machines. We recommend placing the write cache folder on an SSD drive. <input checked="" type="checkbox"/> Enable vPower NFS service on the mount server (recommended) <span>Ports...</span> Unlocks instant recovery of any backup (physical, virtual or cloud) to a VMware vSphere VM. vPower NFS service is not used for instant recovery to a Microsoft Hyper-V VM.
Review	
Apply	
Summary	

< Previous Next > Finish Cancel



Le résumé pour vous dire qu'en tout est bon puis cliquer sur Apply

New Backup Repository✕



**Review**  
Please review the settings, and click Apply to continue.

Name

Server

Repository

Mount Server

Review

Apply

Summary

The following components will be processed on server WIN-5RQPB6JO5CD.sauvegarde.local:

Component name	Status
Transport	already exists
vPower NFS	already exists
Mount Server	already exists

☐ Search the repository for existing backups and import them automatically  
☐ Import guest file system index data to the catalog

< Previous


Apply

Finish

Cancel

Cliquer sur Next

New Backup Repository



**Apply**  
Please wait while backup repository is created and saved in configuration, this may take a few minutes.

Name

Server

Repository

Mount Server

Review

**Apply**

Summary

Message	Duration
✓ Starting infrastructure item update process	0:00:05
✓ [WIN-5RQPB6JO5CD] Discovering installed packages	
✓ Registering client WIN-5RQPB6JO5CD for package Transport	
✓ Registering client WIN-5RQPB6JO5CD for package vPower NFS	
✓ Registering client WIN-5RQPB6JO5CD for package Mount Server	
✓ Discovering installed packages	
✓ All required packages have been successfully installed	
✓ Detecting server configuration	
✓ Reconfiguring vPower NFS service	0:00:07
✓ Creating configuration database records for installed packages	
✓ Collecting backup repository info	
✓ Creating database records for repository	0:00:01
✓ Backup repository has been saved successfully	

< Previous

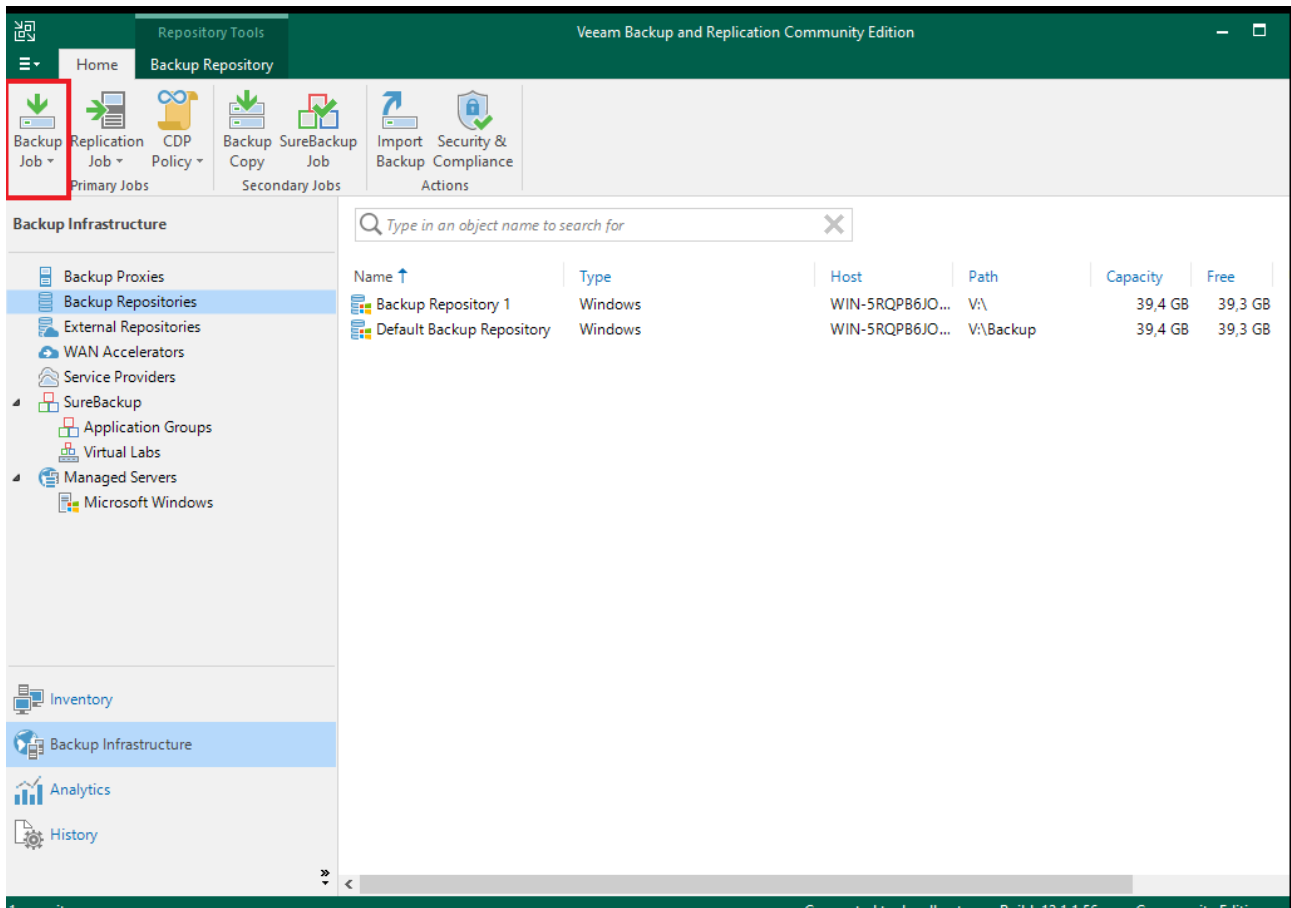
**Next >**

Finish

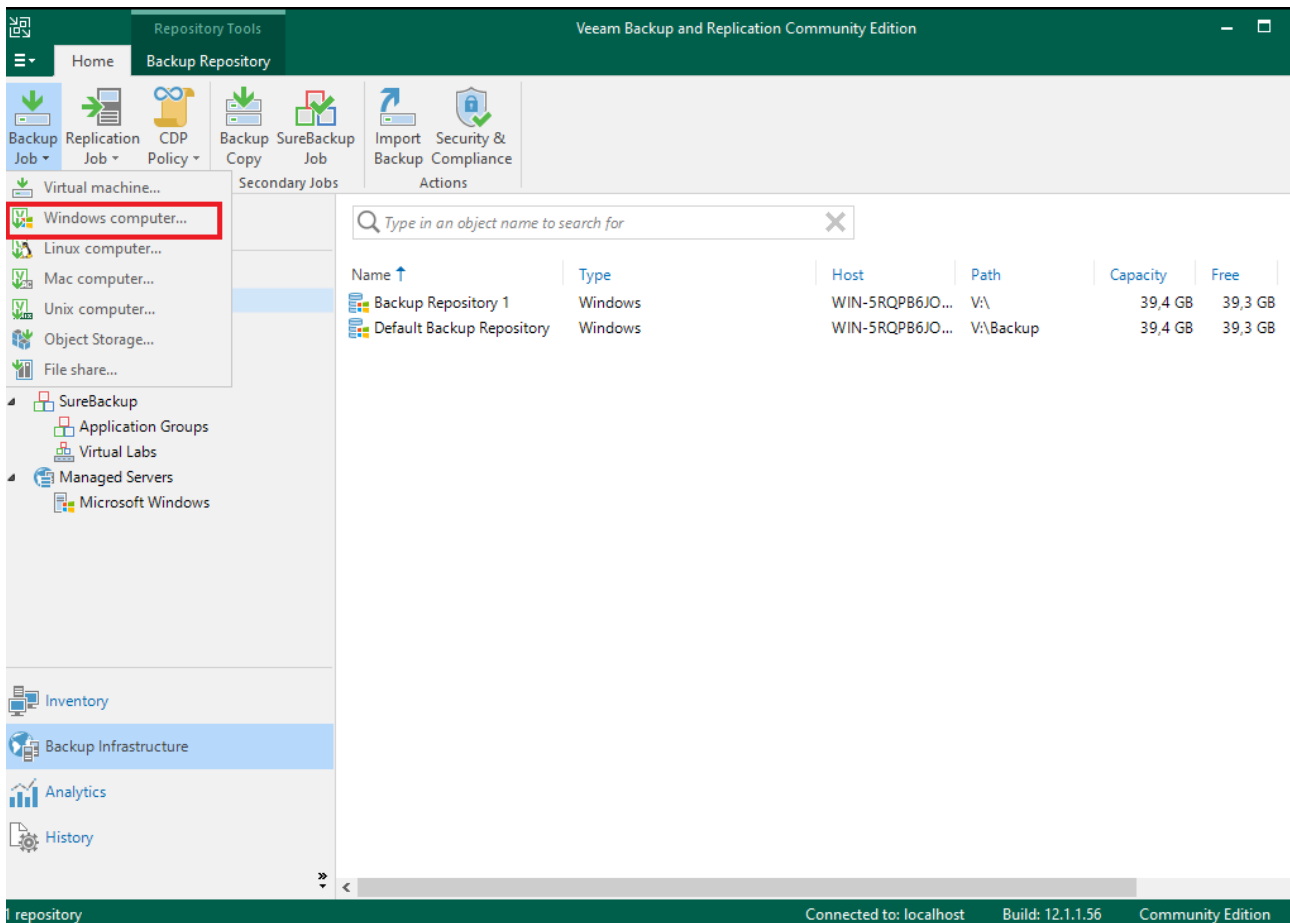
Cancel

Creation de job :

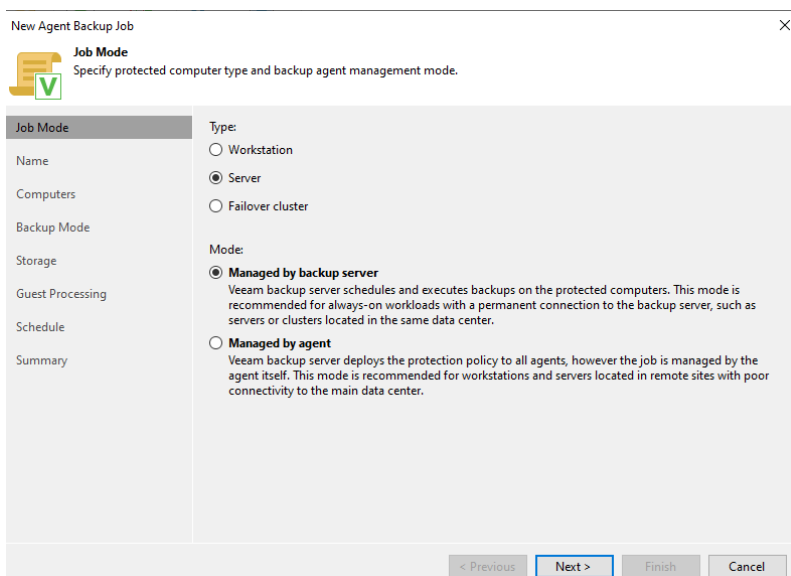
Dans « Home » cliquer sur « Backup Job » puis « Windows Computer » pour sauvegarder vos machines virtuelles Windows titre : La création de Job



Dans Backup Job, allez sur Windows computer




Sélectionner le type de job que vous voulez faire, ainsi que le mode de traitement, soit par un agent soit par un serveur.



## Mettre le nom du job

New Agent Backup Job ✕

 **Name**  
Type in a name and description for this agent backup job.

Job Mode	Name: <input type="text" value="Agent Backup Job 1"/>
<b>Name</b>	Description: <input type="text" value="Created by SAUVEGARDE\Administrateur at 02/04/2024 23:20."/>
Computers	
Backup Mode	
Storage	
Guest Processing	
Schedule	
Summary	

☐ High priority  
Backup infrastructure resources are offered to high priority jobs first. Use this option for jobs sensitive to the start time, or jobs with strict RPO requirements.

< Previous Next > Finish Cancel

## Mettre le nom ou l'ip de l'host

Add Computer ✕

Host name or IP address:


Credentials:  
 ▼ Add...

[Manage accounts](#)

OK Cancel

## Sélectionner le mode de sauvegarde que vous voulez effectuer sur votre machine

New Agent Backup Job ×


 **Backup Mode**  
Choose what data you want to back up from selected computers.


Job Mode	<input checked="" type="radio"/> <b>Entire computer</b> Back up entire computer image for fast recovery on any level. Deleted, temporary and page files are automatically excluded from the image to reduce the backup size. <input type="checkbox"/> Include external USB drives
Name	
Computers	
<b>Backup Mode</b>	<input type="radio"/> <b>Volume level backup</b> Back up images of specified volumes, for example only data volumes. Deleted, temporary and page files are automatically excluded from the image to reduce the backup size.
Storage	
Guest Processing	<input type="radio"/> <b>File level backup (slower)</b> Back up selected files and directories only. This mode still produces an image-based backup, but only with protected file system objects included in the image.
Schedule	
Summary	

< Previous   **Next >**   Finish   Cancel

## Cliquez sur Next

New Agent Backup Job ×


 **Storage**  
Specify a backup repository to store the backup files produced by the backup job and customize advanced job settings if required.

Job Mode	Backup repository: Default Backup Repository (Created by Veeam Backup) <span>▼</span>
Name	 39,3 GB free of 39,4 GB <span>Map backup</span>
Computers	Retention policy: 7 <span>▼</span> days <span>▼</span>
Backup Mode	<input type="checkbox"/> Keep certain full backups longer for archival purposes <span>Configure...</span>
<b>Storage</b>	<input type="checkbox"/> Configure secondary destinations for this job GFS retention policy is not configured Copy backups produced by this job to another backup repository, or tape. We recommend to make at least one copy of your backups to a different storage device that is located off-site.
Guest Processing	
Schedule	
Summary	Advanced job settings include backup mode, compression and deduplication, block size, notification settings, automated post-job activity and other settings. <span>Advanced...</span>

< Previous   **Next >**   Finish   Cancel

Cocher la case Run puis cliquer sur Apply

New Agent Backup Job ×

 **Schedule**  
Specify the scheduling options. If you do not set the schedule, the job will need to be controlled manually.

**Job Mode** ☒ Run the job automatically

**Name** ☒ Daily at this time: 22:00 Everyday Days...

**Computers** ☐ Monthly at this time: 22:00 Fourth samedi Months...

**Backup Mode** ☐ Periodically every: 1 Hours Schedule...

**Storage** ☐ After this job: ▼

**Guest Processing** **Automatic retry**

☒ Retry failed items processing: 3 times

Wait before each retry attempt for: 10 minutes

**Schedule** **Backup window**

☐ Terminate job outside of the backup window Window...

Prevent long-running or accidentally started job from impacting your production infrastructure during the busy hours.

< Previous Apply Finish Cancel

Votre Job est prêt, cliquer dessus et sélectionner « Active Full » pour une sauvegarde complète de votre machine.

## Test de sauvegarde